

Agarose MS (Molecular Screening)

Agarose MS is a molecular screening agarose for improved resolution of DNA fragments with 500 bp or less, especially primer-sized fragments.

At a 3 % concentration, Agarose MS gives a resolution of DNA fragments similar to gels made with polyacrylamide at concentrations of 8 %.

Features

- *Sharp finely resolved bands.*
- *High resolution of short PCR products and DNA fragments for improved clarity of the gel, enhancing visibility.*
- *Stronger gel structure and higher gel strength for better handling. The chances of gels breaking or cracking are greatly minimized, even at lower concentrations.*
- *High gel strength allows use in blotting.*
- *Low DNA binding for easy recovery.*

Applications

PCR screening

Specifications

CLARITY 1.5% (NTU)	≤7
ELECTROENDOSMOSIS (EEO)	≤ 0.12
SULFUR AS SO ₄	0.11%
GELLING TEMPERATURE (1.5 %)	≥31° C
MELTING TEMPERATURE (1.5 %)	≥76° C
GEL STRENGTH (3%)	≥500 G/CM ²
DNASE	NONE DETECTED
RNASE	NONE DETECTED

Ranges of separation:

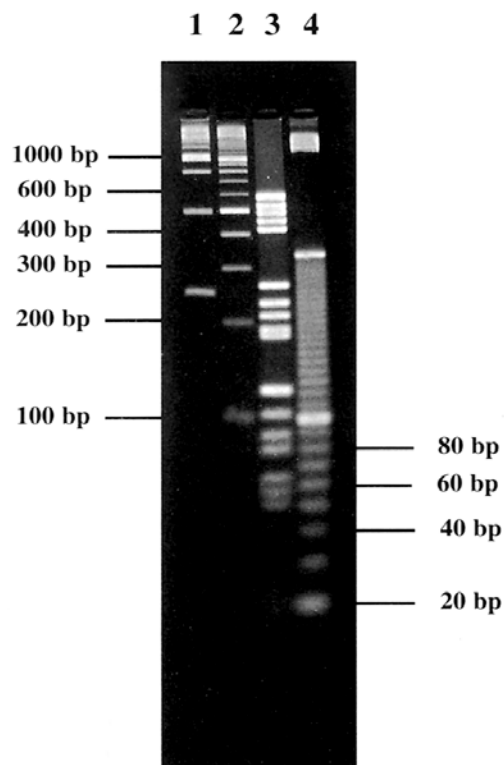
- 3% 80 – 500 bp
- 4% 30 – 300 bp
- 5% 10 – 200 bp

These ranges are approximate and have been calculated in 1X TAE buffer. To achieve the best resolution of Agarose MS gels, store at 4 - 8°C for 20 hours before use. Please note that while MS may be dissolved carefully by microwaving, gels are best prepared by autoclaving.

Storage and Stability

Store in a cool dry place at 15-25°Celsius.

Results



Agarose MS gel, 3% concentration in 1X TAE buffer.

Lane 1- 250 bp ladder.

Lane 2-100 bp ladder.

Lane 3-Molecular weight marker V (Roche).

Lane 4-10 bp ladder.

Electrophoresis conditions: submarine gel, 2 hours, 4.5 V/cm in 1X TAE buffer.

Ordering Information

Part#	Product	Qty.
AGR-MS-50	Agarose MS	50gm
AGR-MS-100	Agarose MS	100gm